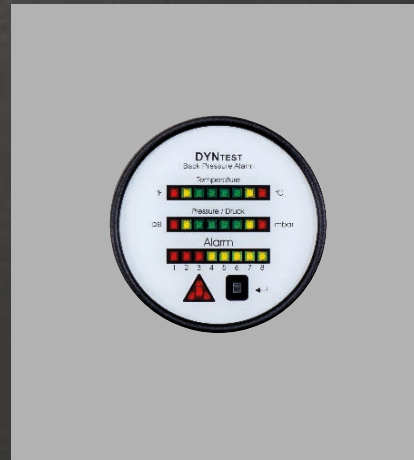


# DYNTEST System

## Product Catalogue 2022

valid from 01.10.2021



CPK Automotive GmbH & Co. KG  
Gildenstr. 4c  
48157 Muenster  
Tel.: +49 251 777969-0  
info@cpk-automotive.com

[www.cpk-automotive.com](http://www.cpk-automotive.com)

## Content

Logger for different Applications	3
Add On Modules for different Applications	6
SCR Systems	9
Service-Sets & Accessories	11
Control Programs*	14
Spare Parts	16



Logger for different Applications

# Logger

---

## DYNTEST SYSTEM – On-Road

Consisting of:

- ControlBox
- On-Road Display
- Wire harness
- Fuse Kit
- Manual



Art.-No.: 20910S

---

## DYNTEST SYSTEM – Off-Road

Consisting of:

- ControlBox
- Off-Road Display
- Wire harness
- Fuse Kit
- Manual



Art.-No.: 20912S

---

## DYNTEST SYSTEM – OEM Off-Road

Consisting of:

- OEM ControlBox
- Off-Road Display
- Wire harness
- Fuse Kit
- Differential pressure sensor
- Pressure-Connection Kit
- Manual



Art.-No.: 30912S

---

## DYNTEST SYSTEM – ControlBox NOx

Consisting of:

- ControlBox NOx
- On-Road Display
- Wire harness
- Fuse Kit
- Manual



Art.-No.: 40100S

---

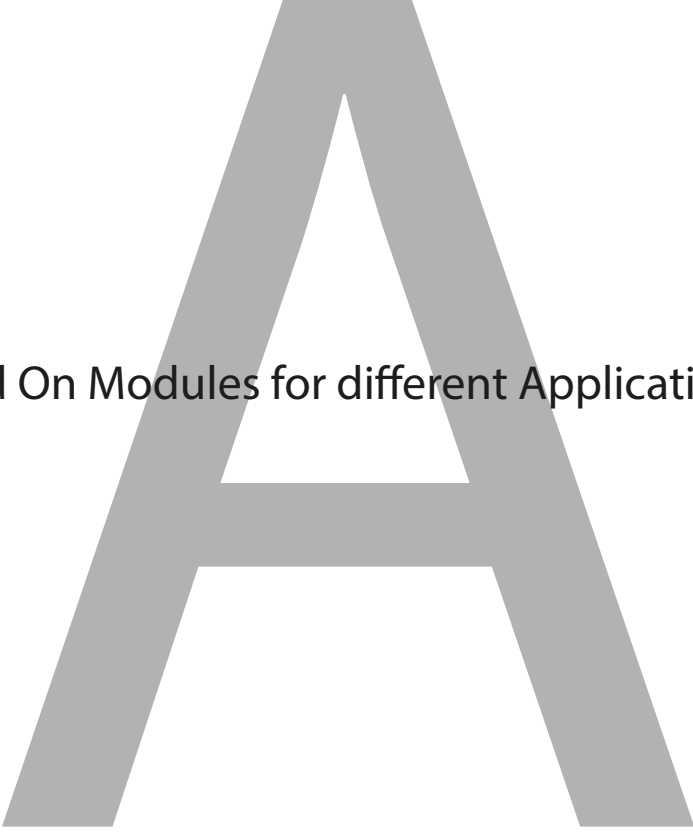
## DYNTEST SYSTEM – Control cabinet NOx

Cabinet incl.:

- ControlBox NOx
- On-Road Display
- Wire harness/Connector set
- Fuse kit
- Manual



Art.-No.: 40100S\_Ind

A large, bold, gray letter 'A' is centered on the page. The text 'Add On Modules for different Applications' is overlaid on the middle of the letter.

Add On Modules for different Applications

# Add On Module

---

## **DYNTEST Module – LiquiCat - stainless steel Additiv Tank 2l**

Consisting of:

- Stainless steel tank 2l
- Dosing pump
- Levelsensor
- Manual



Art.-No.: 20141 (12V)

Art.-No.: 20151 (24V)

---

## **DYNTEST Module – LiquiCat - stainless steel Additiv Tank 4l**

Consisting of:

- Stainless steel tank 4l
- Dosing pump
- Levelsensor
- Manual



Art.-No.: 20142 (12V)

Art.-No.: 20152 (24V)

---

## DYNTEST Module – CatFire V2 - Diesel Oxidation System

Consisting of:

- Module CatFire V2
- CatFire Connection kit
- Manual



Art.-No.: 20975

## Additional Accessories CatFire V2:

### Wire harness Off-Road

Consisting of:

- Wire harness with **2** Temperature sensors

Art.-No.: 20119S\_2T

### Wire harness On-Road

Consisting of:

- Wire harness with **2** Temperature sensors

Art.-No.: 20118S\_2T

### Temperature sensor

Consisting of:

- Temperature sensor, 90 ° angle, 5m cable

Art.-No.: 20125

## DYNTEST IdleControl - automatic engine stop

Consisting of:

- IdleControlBox
- Wire harness
- Manual



Art.-No.: 20202 (12V)

Art.-No.: 20201 (24V)

## Additional Accessories IdleControl:

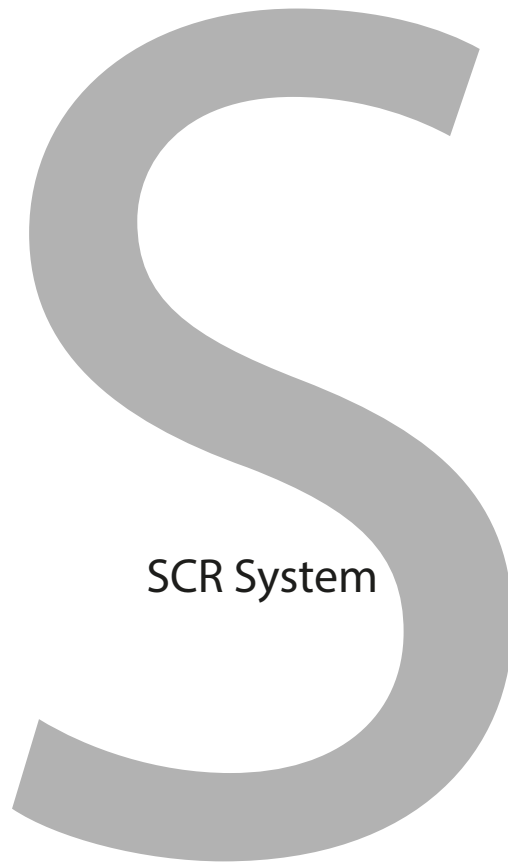
### Ambient temperature sensor

Art.-No.: 20121-001

### 3/2 Way Valve

Art.-No.: 20203-06



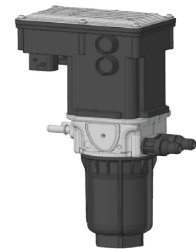
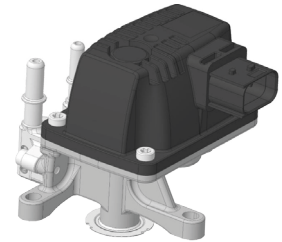


# SCR System

---

Consisting of:

- Control Unit
- Dosing Unit
- Supply Unit
- Display
- Connector Kit
- Manual



Art.-No.: 20933

---

## Optional:

NOx Sensor 24V



Art.-No.: 20923



# Service-/Analyser-Sets

Art.-No.: 20700



## Service Set

Consisting of:

- Data-Analyser
- Analysing Software
- USB cable 5 m
- Adapter Off-Road Display/Bus cable
- Carrying case, grey
- Pressure pump with gauge and tube

Art.-No.: 20300



## Analyser-Set

Consisting of:

- Data-Analyser
- Analysing Software
- USB cable 5 m
- Adapter Off-Road Display/Bus cable
- Carrying case, grey

Art.-No.: 20401



## DYNCHECK

Consisting of:

- Pressure pump with gauge and tube
- Carrying case, grey

# Accessories

Art.-No.: 20161

## CAN I/O CAN-RS232



- CAN Bus and CAN J1939 communication
- Additional In-and Outputs for complex controls (Burner, EGR, SCR..)

Art.-No.: 20940

## Micro SPS 12 Volt



Extension of the DYNTEST System additional 4 In- and 3 Outputs

Art.-No.: 20941

## Micro SPS 24 Volt



Extension of the DYNTEST System additional 4 In- and 3 Outputs

Art.-No.: 20190

## Bus connection



Art.-No.: 20130

## Pressure Connection Set



- Consisting of:
- Stainless Steel tube 0,57 m
  - Pressure Hose 2 m
  - Cable fixer
  - Clamp ring connector 1/4" NPT



\* Note: More information about the control programs on request!

Remark: Special models available on request. Please do not hesitate to contact us!

# Control-Programs

**Art.-No.: 20502**

**LiquiCat Dosing program FBC**

Additiv-Dosing program into feeding or return line; half or fully automatic

**Art.-No.: 20500**

**Dosing program 109**

Additiv-Dosing program into feeding line, fully automatic

**Art.-No.: 20501**

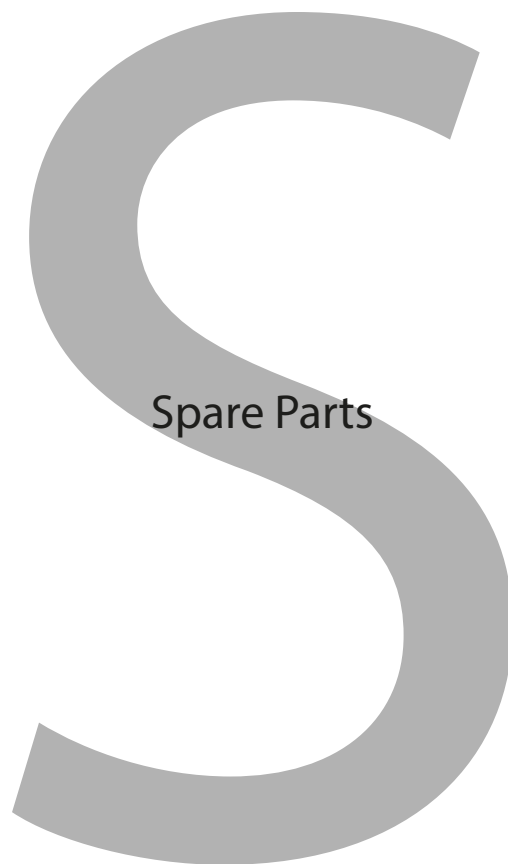
**Dosing program 115**

Additiv-Dosing program into return line, half automatic

**Art.-No.: 20504**

**Dosing program 114**

Additive-Dosing into return line, half automatic by detection of the refuel procedure





# Spare Parts

Art.-No.: 20301



**Data Analyser**  
with USB cable 5.0 m

Art.-No.: 20303



**Analyser Software**  
DVD/USB-Stick with Software

Art.-No.: 20220



**Carrying case, grey**

Art.-No.: 20600



**Additiv pump**  
24V (DC)

Art.-No.: 20601



**Additiv pump**  
12V (DC)

Art.-No.: 20140



**Water trap**  
without drain

Art.-No.: 20144\_ST4



**Level sensor**  
for Additiv tank 4,0l

Art.-No.: 20143\_ST2



**Level sensor**  
for Additiv tank 2,0l

Art.-No.: 20131



**Clamp ring connector**  
1/4" NPT; SW 14/14; 6,1mm

Art.-No.: 20136



**Clamp ring connector**

1/4" BSD; SW 19/4

Art.-No.: 20171



**High performance relay**

24V, 100A

Art.-No.: 20170



**High performance relay**

12V, 100A

Art.-No.: 20103S



**ControlBox**

ECU

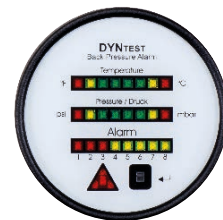
Art.-No.: 20111S



**On-Road Display**

with buzzer

Art.-No.: 20112S



**Off-Road Display**

IP 67

Art.-No.: 20114



**Adapter Off-Road**

Wire harness to Bus cable  
Deutsch connector (female) ->  
Connector RJ45

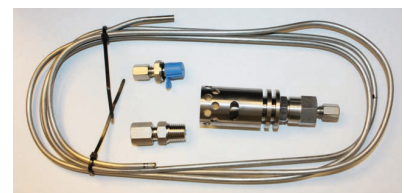
Art.-No.: 20128



**Adapter On-Road**

Wire harness (Bus cable) ->Off-  
Road Panel Box; Connector RJ45  
-> Deutsch connector (male)

Art.-No.: 20974



**CatFire Connection kit**

Pressure hose 2 m, Clamp ring  
connector stainless steel 1/4"  
NPT, weld-on sleeve, Injection  
nozzle 2.0/30°

# Spare Parts

Art.-No.: 20118S



**Wire harness On-Road**

with Spout and Temperature sensor 5m, 90 degrees angle

Art.-No.: 20119S



**Wire harness Off-Road**

with Spout and Temperature sensor 5m, 90 degrees angle

Art.-No.: 20974-51



**Weld on sleeve, small**

stainless steel, 1/4"round

Art.-No.: 20124



**Temperature sensor 2m**

90° angle, 2m connection cable

Art.-Nr.: 20125



**Temperature sensor 5m**

90° angle, 5m connection cable

Art.-Nr.: 20126



**Temperature sensor 10m**

90° angle, 10m connection cable

Art.-No.: 20350



**Extention cable 10m**

Extension for Wire harness/Panel Box with inline coupler (Installation inside of a vehicle)

Art.-No.: 20351



**Extention cable 5 m**

Extension for Wire harness/Panel Box with inline coupler (Installation inside of a vehicle)

Art.-No.: 20355



**Data cable "On-Road" Exchang**

Exchange data cable for Wire harness/Panel Box with inline coupler (Installation inside of a vehicle)!

**Art.-No.: 20355\_off-road**



**Data cable "Off-Road" Exchange**

Exchange data cable for Wire harness/Panel Box with inline coupler (Installation outside of a vehicle)

**Art.-No.: 20102**



**Power supply for CB (Vers. 3.x)**

Power supply for maintenance of the actual time and data

**Art.-No.: 20150**



**Fuse Kit**

standard with NPT